

© E V O K E

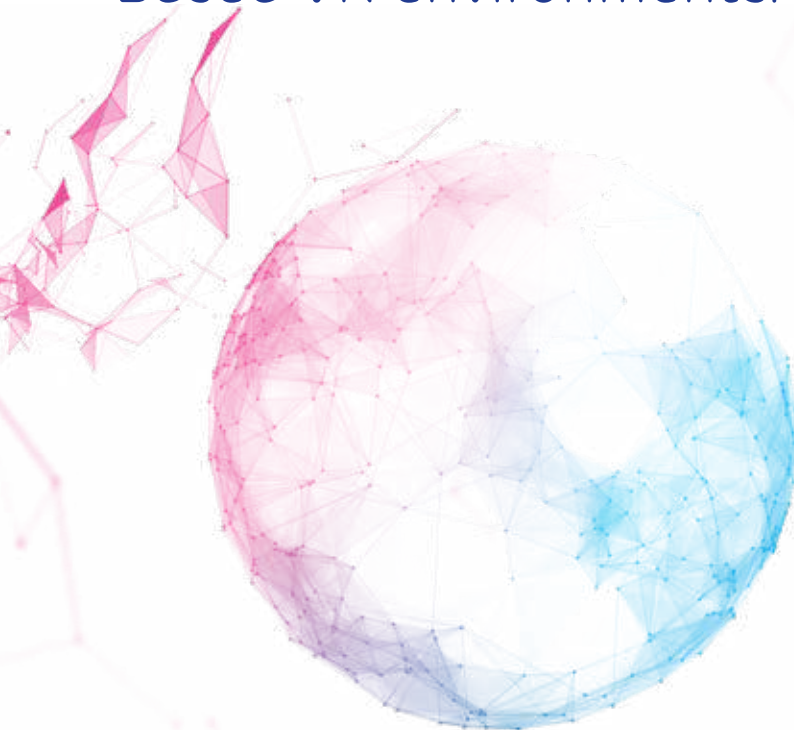
Create your own reality.
Software for LBVR
entertainment.

O R I G I N

C O N N E C T I N G
W O R L D S



Intelligent software designed for Location Based VR environments.



Seamless game-engine integration

Seamless game engine integration provides solving within the game engine, with retiming for smooth tracking, with low latency and reduced lag.



Characters from Clusters

Unlimited full body movement tracking of fully solved characters.



Quick set up

Intelligent new tracking panel for pre-made object templates for HMD's and props for quick set up.



System AutoHeal

Automatically repairs camera calibration with active data for consistent and precise tracking.

Intuitive software designed for Origin which brings together the best of Vicon tech to create unrivalled full body immersive experiences.

The highly automated platform offers full control, real-time best tracking on the market* and quick player turnaround. Now with 'Headless Mode', plus a fully featured command and control API, to interface with custom-built host applications. Origin delivers the most natural and fluid user experience with accurate movement and positional tracking working seamlessly with the virtual world.

*March 2019

Realize your potential

Origin is here to power projects of any scale or complexity with fast and easy set up and the intelligence and intuition to handle unlimited tracking in real time. Contact us to get the most out of your kit.

The Origin system is truly end to end, providing solving into game engines without the need for third party software.

A new world awaits.
Contact us to find out more.

info@vicon.com
support@vicon.com

Oxford.
Denver.
Los Angeles.
Auckland.

www.originbyvicon.com

A RANGE OF LOCATION BASED VR PRODUCTS BY **VICON**

